



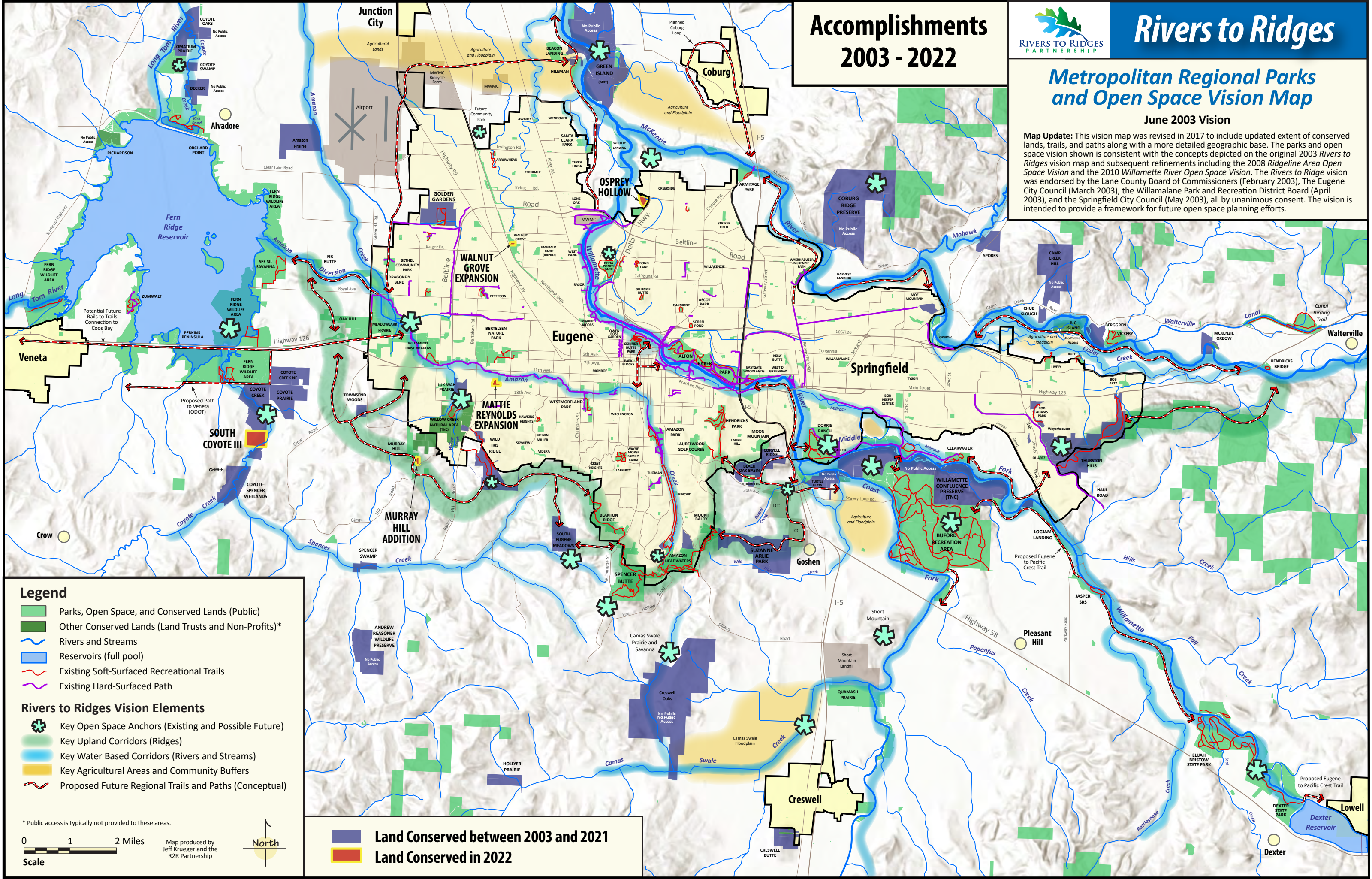
Rivers to Ridges

Accomplishments 2003 - 2022

Metropolitan Regional Parks and Open Space Vision Map

June 2003 Vision

Map Update: This vision map was revised in 2017 to include updated extent of conserved lands, trails, and paths along with a more detailed geographic base. The parks and open space vision shown is consistent with the concepts depicted on the original 2003 *Rivers to Ridges* vision map and subsequent refinements including the 2008 *Ridgeline Area Open Space Vision* and the 2010 *Willamette River Open Space Vision*. The *Rivers to Ridges* vision was endorsed by the Lane County Board of Commissioners (February 2003), The Eugene City Council (March 2003), the Willamalane Park and Recreation District Board (April 2003), and the Springfield City Council (May 2003), all by unanimous consent. The vision is intended to provide a framework for future open space planning efforts.



Legend

- Parks, Open Space, and Conserved Lands (Public)
- Other Conserved Lands (Land Trusts and Non-Profits)*
- ~ Rivers and Streams
- Reservoirs (full pool)
- ~ Existing Soft-Surfaced Recreational Trails
- ~ Existing Hard-Surfaced Path

Rivers to Ridges Vision Elements

- ✱ Key Open Space Anchors (Existing and Possible Future)
- ~ Key Upland Corridors (Ridges)
- ~ Key Water Based Corridors (Rivers and Streams)
- ~ Key Agricultural Areas and Community Buffers
- ~ Proposed Future Regional Trails and Paths (Conceptual)

* Public access is typically not provided to these areas.

0 1 2 Miles
Scale

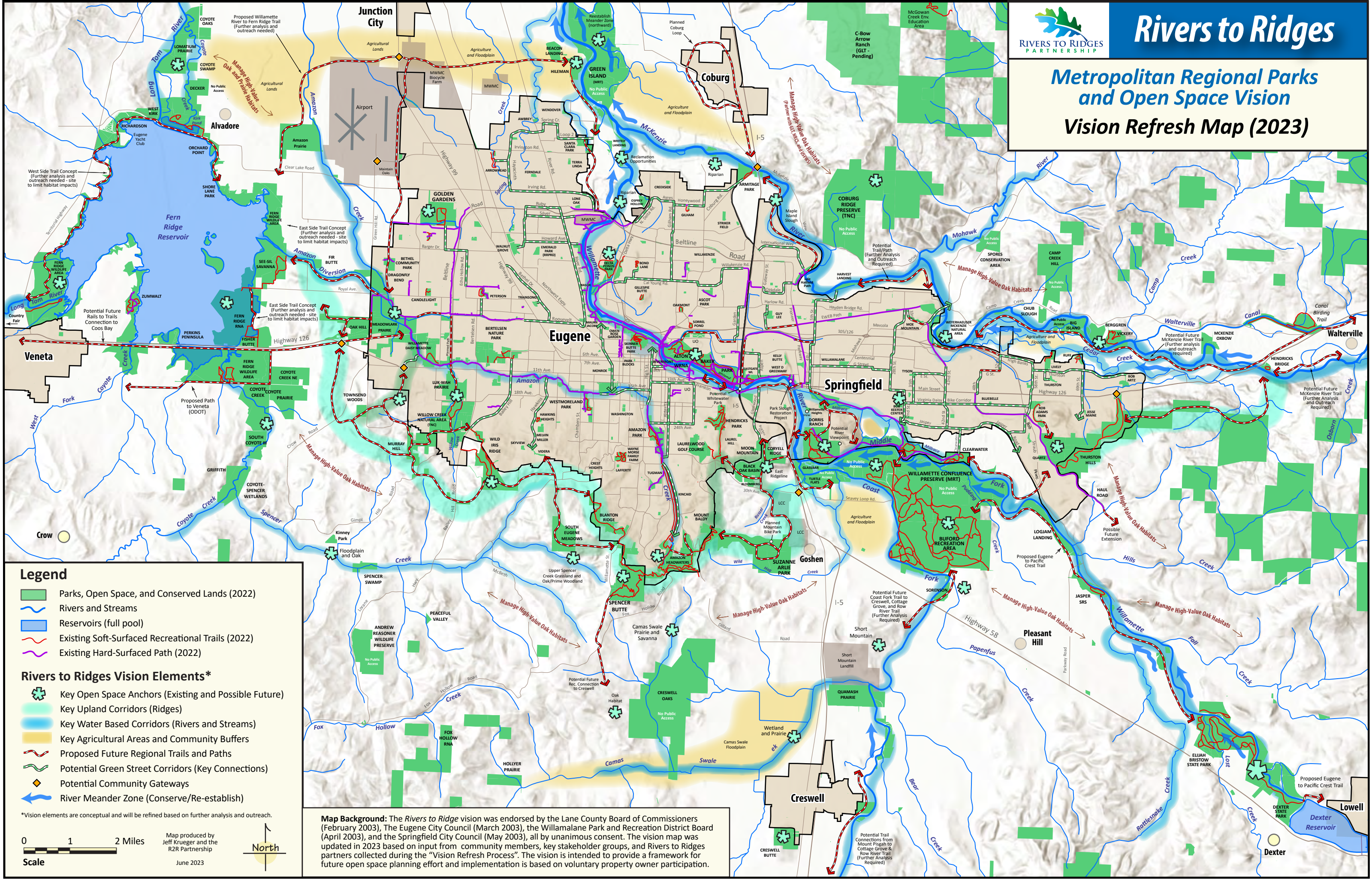
Map produced by Jeff Krueger and the R2R Partnership

North

■ Land Conserved between 2003 and 2021

■ Land Conserved in 2022

Metropolitan Regional Parks and Open Space Vision Vision Refresh Map (2023)



Legend

- Parks, Open Space, and Conserved Lands (2022)
- Rivers and Streams
- Reservoirs (full pool)
- Existing Soft-Surfaced Recreational Trails (2022)
- Existing Hard-Surfaced Path (2022)

Rivers to Ridges Vision Elements*

- Key Open Space Anchors (Existing and Possible Future)
- Key Upland Corridors (Ridges)
- Key Water Based Corridors (Rivers and Streams)
- Key Agricultural Areas and Community Buffers
- Proposed Future Regional Trails and Paths
- Potential Green Street Corridors (Key Connections)
- Potential Community Gateways
- River Meander Zone (Conserve/Re-establish)

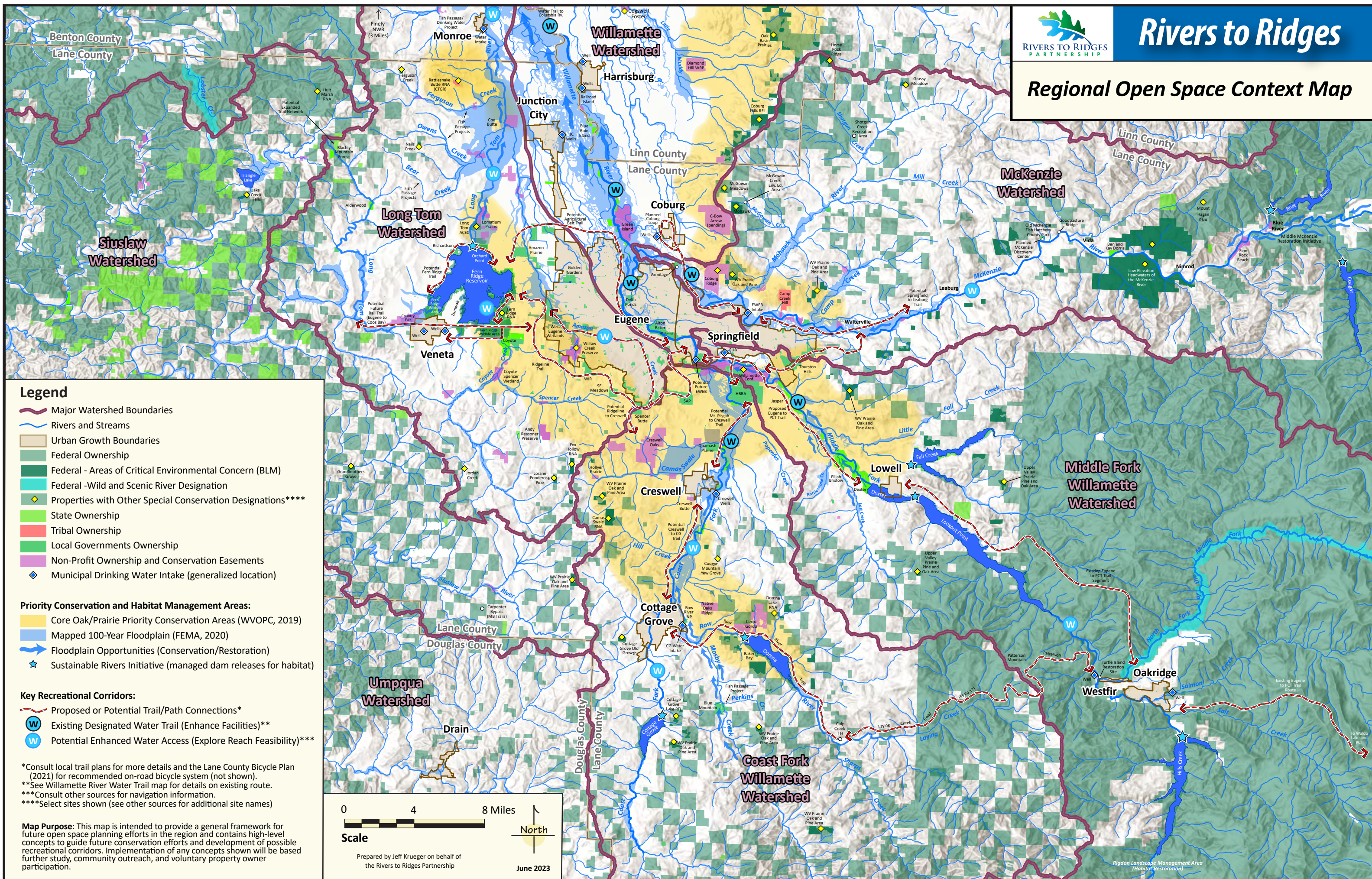
*Vision elements are conceptual and will be refined based on further analysis and outreach.

0 1 2 Miles
Scale

Map produced by
Jeff Krueger and the
R2R Partnership
June 2023

North

Map Background: The *Rivers to Ridge* vision was endorsed by the Lane County Board of Commissioners (February 2003), The Eugene City Council (March 2003), the Willamalane Park and Recreation District Board (April 2003), and the Springfield City Council (May 2003), all by unanimous consent. The vision map was updated in 2023 based on input from community members, key stakeholder groups, and Rivers to Ridges partners collected during the "Vision Refresh Process". The vision is intended to provide a framework for future open space planning effort and implementation is based on voluntary property owner participation.



- ### Legend
- Major Watershed Boundaries
 - Rivers and Streams
 - Urban Growth Boundaries
 - Federal Ownership
 - Federal - Areas of Critical Environmental Concern (BLM)
 - Federal - Wild and Scenic River Designation
 - Properties with Other Special Conservation Designations****
 - State Ownership
 - Tribal Ownership
 - Local Governments Ownership
 - Non-Profit Ownership and Conservation Easements
 - Municipal Drinking Water Intake (generalized location)


- ### Priority Conservation and Habitat Management Areas:
- Core Oak/Prairie Priority Conservation Areas (WVOPC, 2019)
 - Mapped 100-Year Floodplain (FEMA, 2020)
 - Floodplain Opportunities (Conservation/Restoration)
 - Sustainable Rivers Initiative (managed dam releases for habitat)

- ### Key Recreational Corridors:
- Proposed or Potential Trail/Path Connections*
 - Existing Designated Water Trail (Enhance Facilities)**
 - Potential Enhanced Water Access (Explore Reach Feasibility)***

*Consult local trail plans for more details and the Lane County Bicycle Plan (2021) for recommended on-road bicycle system (not shown).
 **See Willamette River Water Trail map for details on existing route.
 ***Consult other sources for navigation information.
 ****Select sites shown (see other sources for additional site names)

Map Purpose: This map is intended to provide a general framework for future open space planning efforts in the region and contains high-level concepts to guide future conservation efforts and development of possible recreational corridors. Implementation of any concepts shown will be based further study, community outreach, and voluntary property owner participation.

0 4 8 Miles



Scale

North

Prepared by Jeff Krueger on behalf of the Rivers to Ridges Partnership

June 2023