

HELP SECURE A VITAL PROPERTY

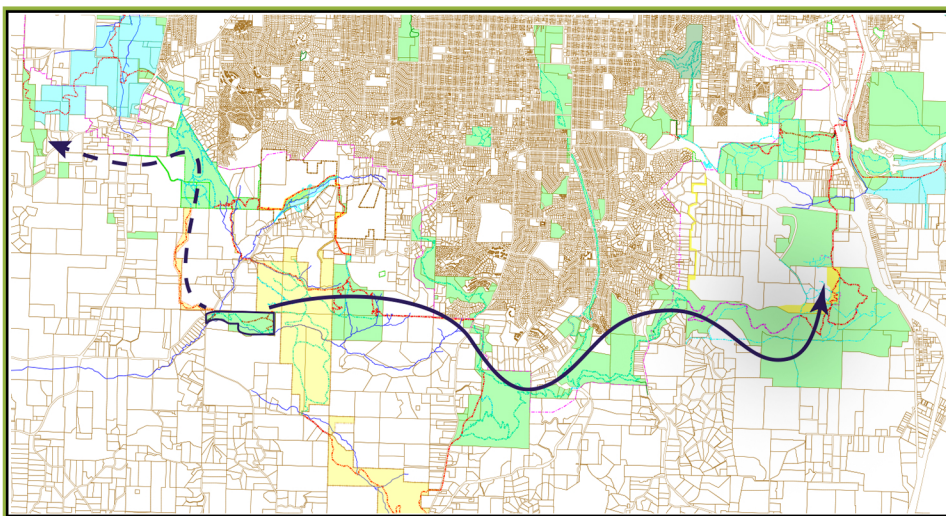
The Forest Ranch Property is a 73 acre property located near Lorane Highway and McBeth roads, across from the Spencer Creek Grange. The property has approximately 1/2 mile of frontage on two branches of Spencer Creek. This tranquil wilderness, with its mature woodlands and the meandering Spencer Creek, offers a rare intact natural sanctuary in close proximity to Eugene and other conservation properties. Comprising approximately 70% mixed woodlands and 30% open meadow, this parcel has remained untouched by logging for over 75 years, boasting a rich tapestry of mature trees including douglas fir, cedar, oak, and pine.



Large oak in central meadow



View looking towards Spencer Creek



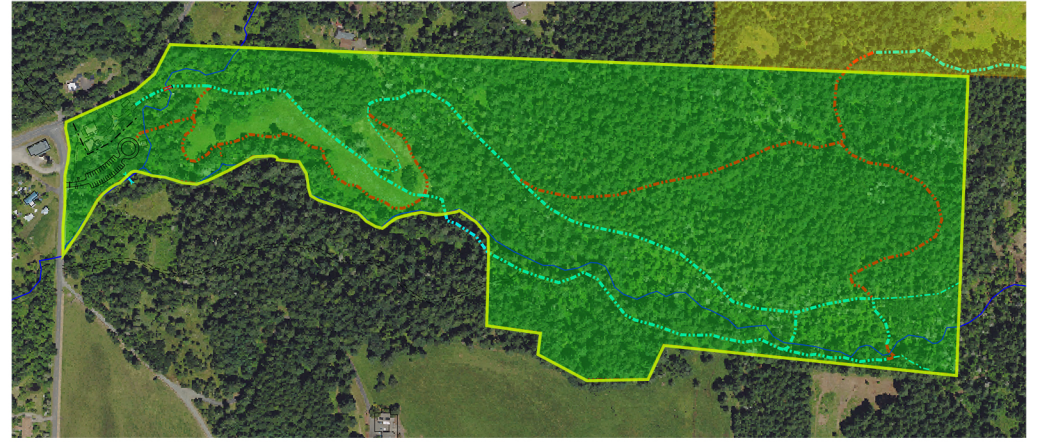
Potential connectivity to the greater Rivers-to-Ridges Vision

Partnering for Preservation

The Eugene Parks Foundation is seeking support and partnership with the Rivers to Ridges partner members. The envisioned outcome is the purchase of the property as a natural area park with public access, to be held by the City of Eugene. The estimated cost of the project is approximately \$1.2 million. A private donor is offering a two to one match to raise the purchase price up to \$800,000 leaving approximately \$400,000 to be raised from the local community.

A Gift to Future Generations

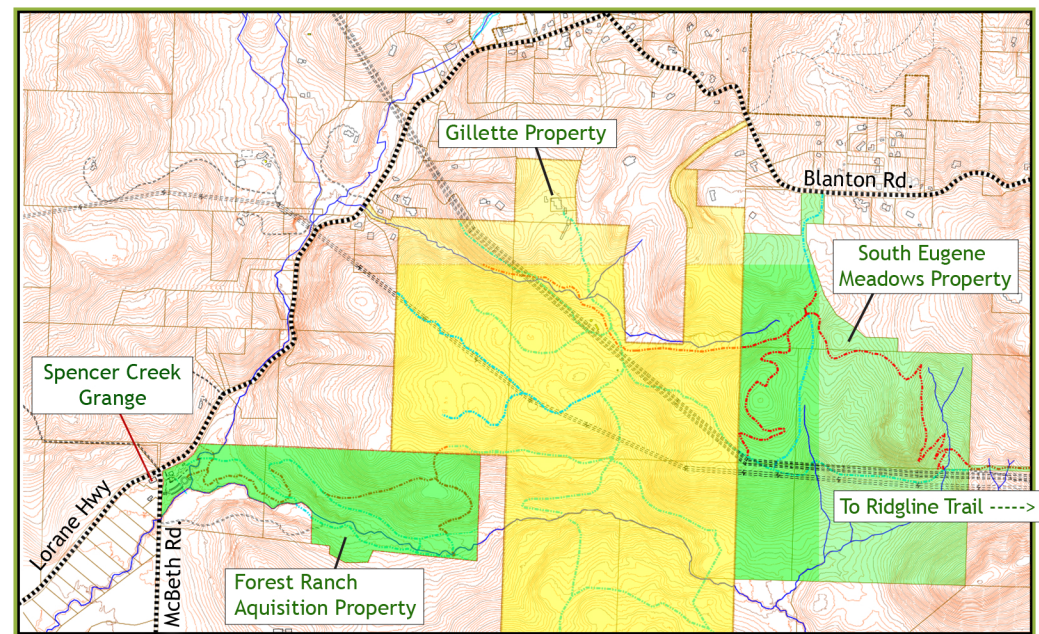
This endeavor represents a significant opportunity for the City of Eugene to acquire a remarkable park for its current and future citizens. The scarcity of large acreages with mature forested areas in close proximity to the city makes the Forest Ranch an invaluable asset. With many of its fir, cedar, and pine trees exceeding 100 years in age, and the remainder of the stands at least 75 years old, the Forest Ranch promises to offer a mature forest experience akin to Hendricks and Spencer Butte Parks, but with even greater species diversity. Additionally, its blend of wooded terrain, open meadows, and creek frontage offers a uniquely diverse recreational setting unparalleled by any current city park. As Eugene families seek forested and creek experiences for walking and natural immersion, the Forest Ranch stands ready to provide this opportunity without the need for lengthy drives to the Cascades or Coast Range. Join us in preserving this invaluable resource for the benefit of present and future generations alike.



Aerial view of the Forest Ranch Property

An Opportunity for Lasting Conservation

The Eugene Parks Foundation (EPF) has been approached by the Hudson family, the current stewards of this invaluable resource, to explore options for conservation. By extending the South Eugene Meadows and Ridgeline Trail system onto the property, there is an opportunity have the chance to create a vital corridor for wildlife and recreational enthusiasts alike. Adjacent to the South Eugene Meadows Park, and with the support of abutting landowners Sara and James Gillette, this initiative promises to enhance connectivity and preserve vital ecosystems.



Potential connectivity to other nearby Eugene trails

Unlocking the Potential of the Forest Ranch Project

The Forest Ranch Project presents a unique opportunity for environmental stewardship and community engagement. The configuration of the parcel lends itself perfectly to the establishment of a public access loop trail system through mature forest and riparian areas along Spencer Creek. Additionally, adequate parking directly adjacent to McBeth Road, supplemented by other potential parking nearby, ensures accessibility for all. Moreover, the inclusion of two modest houses provides avenues for revenue generation, whether through rentals or the possibility of a designated "Park Steward" residence, thereby further offsetting maintenance costs.



One of many large cedar trees on the property



Join or Donate now!

To join in this exciting project please visit our website at:

<https://www.eugeneparksfoundation.org>

Send a check for Forest Ranch to:

**Eugene Parks Foundation,
PO 11618, Eugene, OR 97440.**

For more information and to arrange a visit contact or call John Winqvist:

trails@eugeneparksfoundation.org
541-239-3451